

SkyVision Reveal

Environmental & Room Monitoring

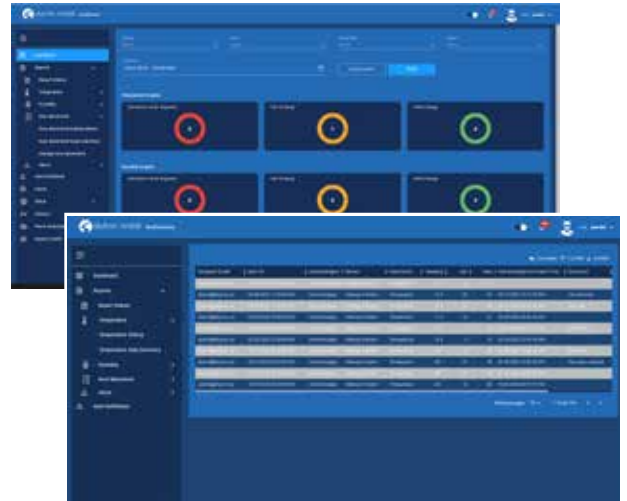
SkyVision Reveal is a monitoring solution to view and log key sensor readings such as temperature, humidity, and door movements. Enhance efficiency, reduce waste, and improve patient safety by having visibility on real-time environmental data.



SkyVision Reveal

SkyVision Reveal provides:

- Sensors & Communication Gateways
- Automated Reports and Dashboards
- Implementation
- Software Support
- Ongoing network support
- Remote monitoring
- Data storage



Room Monitoring

Room monitoring allows you to view and log key in-room environmental metrics including ambient temperature, humidity, and door movements. Skytron Reveal provides access to this important data for the clinicians at any time.

Ideal for Operating Rooms and Sterile Processing Departments.

- Review historic data for trends and outliers
- Sort and filter for specific data criteria
- Export retrospective reports and logs
- Support process improvement initiatives with real data and benchmarking

Environmental Monitoring

Environmental monitoring allows you to view and log temperature readings for status visibility and retrospective reporting. SkyVision Reveal wireless sensors are available for use in refrigerators and freezers.

Ideal for research, lab, pharmacy, food service, and other patient care areas.

- Eliminate labor-intensive manual temperature logging through automated sensor readings
- Real-time active alerting to prevent waste and spoilage
- Access historical log reports to maintain regulatory requirements and ensure compliance

Skytron provides safe and efficient healthcare solutions delivered through a local representative network that values long-term relationships and comprehensive service.

Focused on providing the highest quality solutions while delivering the lowest cost of ownership, we prioritize transparency and accountability in our actions.

To learn more, visit our website at www.skytron.com



5085 Corporate Exchange Blvd. SE
Grand Rapids, MI 49512
1.800.SKYTRON (759-8766)
email: info@skytron.com
www.skytron.com



REV1 10-24
PN L2-010-260